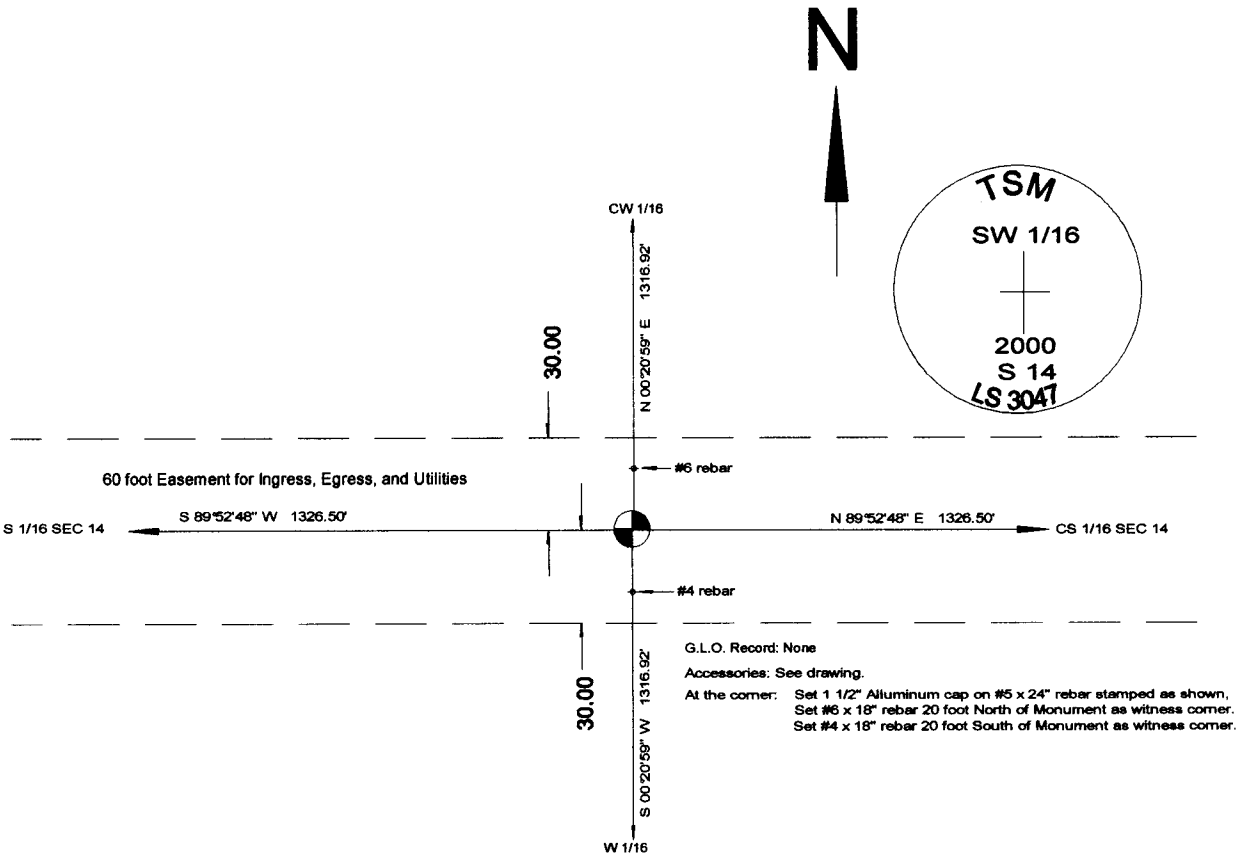


State of Wyoming Corner Record

(In compliance with the CORNER PERPETUATION AND FILING ACT, Wyoming Statutes, 1997, Section 33-29-140 et. seq., and the Rules and Regulations of the Board of Registration for Professional Engineers and Professional Land Surveyors)

Reverse side of this form may be used if more space is needed.

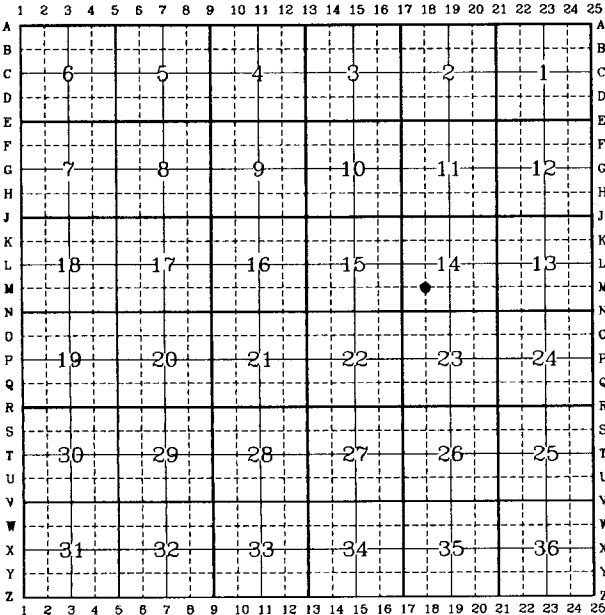
Record of original survey and citation of source of historical information (if corner is lost or obliterated). Description of corner monumentation evidence found and/or monument and accessories established to perpetuate the location of this corner. Sketch of relative location of monument, accessories, and reference points with course and distance to adjacent corner(s) (if determined in this survey). Method and rationale for reestablishment of lost or obliterated corner.



RECORDED 3/05/2001 AT 2:51 PM REC# 290228 K# 1581 PG# 191
DEBRA K. LATHROP, CLERK OF LARAMIE COUNTY, WY PAGE 1 OF 1

Date of Field Work: 11-15-2000 Office Reference:

CROSS INDEX DIAGRAM



Corner Name: SW 1/16

Firm/Agency, Address

Larry, T. Perry, LS#3047
1127 Terry Ranch Road
Cheyenne, Wyoming 82007

Telephone Number: 634-9360
"Your Friendly Neighborhood Surveyor"

This corner record was prepared by me or under my direction and supervision.
SEAL & SIGNATURE

